

REVISIONS		REVISIONS	
NO.	DESCRIPTION	BY	DATE
3	REVISED HOT TUB ARRANGEMENT PER BRADFORD SPINS DWG & EXTERIOR FURNITURE DWG REV 4		
2	REVISED ARRANGEMENT OF 02 DECK EMERGENCY GENERATOR ROOM.		
1	UPDATE FOCSELE BULKMARKS PER C.O. 23.		

REVISIONS		REVISIONS	
NO.	DESCRIPTION	BY	DATE
1	REVISED EVERYTHING ABOVE 01 DECK 9' 1/2" FOR HEAD CLEARANCE, RANSE WINDOWS 4 1/2"		
2	GENERAL UPDATE IN ACCORDANCE WITH DESIGN DEVELOPMENT		
3	REVISED 02 DECK UNIT TO DUAL CAPACITY UNIT PER C.O. #8		
4	REVISED SUNPAD AREA AT PORTUGUESE DECK TO BE SKATING AREA PER C.O. #18		
5	REVISED 02 DECK ARRANGEMENT PER C.O. #19		
6	REVISED MAN DECK MOORING ARRANGEMENTS & BULKMARK GATE POSITIONS.		
7	REVISED OVERALL HANDRAIL DESIGN & LAYOUT.		
8	ADDED 02 DECK WINDSCREEN FOUNDATION.		
9	ADDED 2 FEET TO SWIM PLATFORM PER C.O. # 19.		

REFERENCES	
NO.	DWG NO. TITLE
1.	22121-00 REV 1 01 DECK BROW
2.	20900-00 REV R2 MAIN AND FOCSELE DECK BULKMARKS

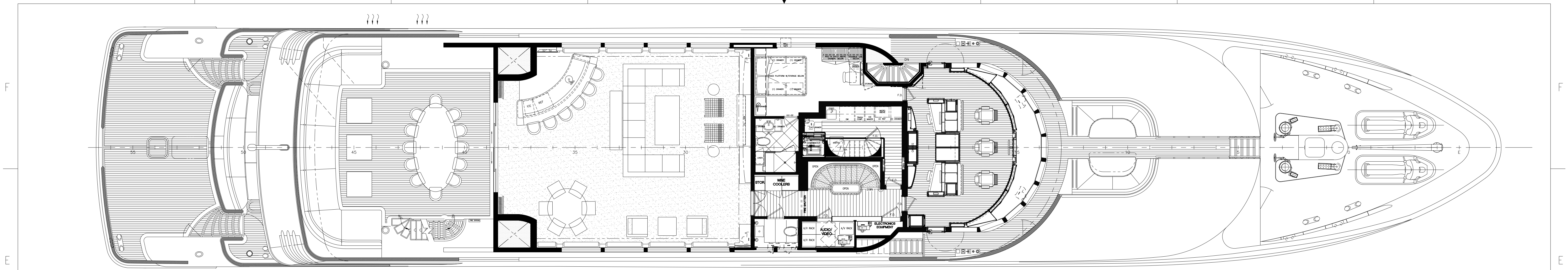
TRINITY YACHTS
 13085 SEAWAY ROAD
 GULFPORT, MS 39503
 228-276-1000
 FAX 228-276-1002

This drawing, design concept, and specifications are the property of TRINITY YACHTS, L.L.C. and are furnished on a confidential basis with an expressed understanding that they will not be copied in any manner, used for manufacture, sold, transferred, nor used in the statement of said firm without written permission. The recipient further agrees not to disclose these contents hereof to any other parties except for those specific purposes for which this drawing was issued.

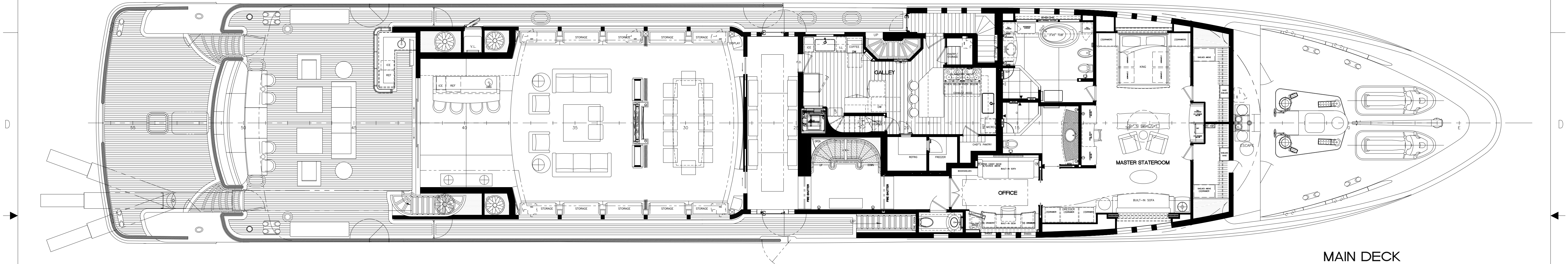
APPROVALS
 CLASS _____
 FLAG _____

TY _____
 OWNER _____

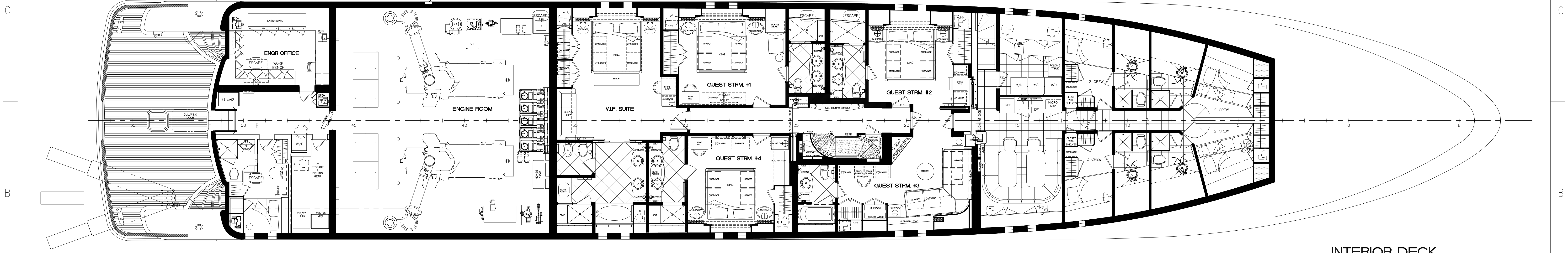
M/Y CARPE DIEM		
191' TRI-DECK MOTORYACHT		
OUTBOARD PROFILE & 02 DECK		
SCALE: 3/16"=1'-0"	DATE: 6/27/07	DWG NO. 10111-00
DRAWN BY: C. CLARK	CK'D BY: J. SHANKS	SHT 1 OF 1
HULL NO.: 047	JOB NO.: T047	REV 3



01 DECK



MAIN DECK



INTERIOR DECK

REVISIONS				REVISIONS				REVISIONS				 <small>13085 SEAWAY ROAD GULFPORT, MS 39503 228-276-1000 FAX 228-276-1002</small>	M/Y CARPE DIEM 191' TRI-DECK MOTORYACHT GENERAL ARRANGEMENT		
NO.	DESCRIPTION	BY	DATE	NO.	DESCRIPTION	BY	DATE	NO.	DESCRIPTION	BY	DATE		SCALE:	DATE:	DWG NO.
1	REVISED PILOT HOUSE PER UPDATED INTERIOR DRAWINGS	WHL	11/10/10	1	REVISED SKYLIGHT ARRANGEMENT AND VENT TRUNK SHAPES TO SUIT CAROL WILLIAMSON LAYOUT.	WHL	3/5/09	1	REVISED SKYLIGHT ARRANGEMENT AND VENT TRUNK SHAPES TO SUIT CAROL WILLIAMSON LAYOUT.	WHL	3/5/09	3/16"=1'-0"	6/27/07	10112-00	
2	REVISED AFT MAIN DECK SEATING, TABLES AND AFT MAIN DECK BAR PER UPDATED CMA DRAWING	WHL	11/10/10	2	REVISED MAIN DECK STBD SIDE ENTRY TO SINGLE DOOR WITH SIDELIGHTS, PENDING CHANGE ORDER.	WHL	6/3/10	2	REVISED VARIOUS INTERIOR ARRANGEMENTS THROUGHOUT TO SUIT CAROL WILLIAMSON LAYOUT.	WHL	8/24/09	DATE:	6/27/07	SHT 1 OF 1	
3	REVISED CREW LOUNGE APPLIANCE LAYOUT PER C.O. #66	WHL	11/10/10	3	Moved LAZARETTE FIRE STATION AFT TO LONG PLATE BHD PORT SIDE, SWITCHED AFT 01 DECK FIRE STATION PORT TO STBD.	WHL	6/3/10	3	REVISED SUNPAD AREA AT PORTUGUESE DECK TO BE SEATING AREA PER C.O. #18.	WHL	8/24/09	CLASS:		REV 4	
4	FLOORING IN SKYLounge, UPDATED PER LATEST INTERIOR DWGS	WHL	11/10/10	4	REVISED LAZARETTE ARRANGEMENTS PER OWNER REQUEST.	WHL	6/3/10	4	ADD/REVISE VARIOUS EXTERIOR FURNITURE CHANGES PER CMA DRAWING DATED 06/02/08, & PER C.O. #19.	WHL	8/24/09	FLAG:			
				5	REMOVED FIRE STATION ON INTERIOR DECK BETWEEN FRAME 17 & 18 PER DESIGN & DEVELOPMENT.			5	ADD HALF-ROUND ALUMINUM STYLING TO VENTILATION LOUVERS 01 DECK BULKHEAD PER C.O. #19.						
				6	REMOVED HAND GRABS AT TRANSOM CORNERS AND AT 01 DECK BROW.			6	ADDED 2 FEET TO SWIM PLATFORM PER C.O. #19.						
				7	REVISED ANCHOR HANDLING PER DESIGN DEVELOPMENT, DWG 30700 REV 3.			7	CHANGED INTERIOR FIRE CURTAINS TO METAL FIRE SHUTTERS PER CISR.						
				8	REMOVED VIEWING WINDOW IN THE CONTROL ROOM PER CHANGE ORDER 42.			8	REVISED INTERIOR FIRE CURTAINS TO METAL FIRE SHUTTERS PER CISR.						
				9	RELOCATED WIND DOORS PER MAIN DECK BULKHEADS DRAWING REV 1.			9	REVISED ANCHOR HANDLING ARRANGEMENTS PER ISSUED DRAWING REV 0.						
				10	RELOCATED AFT 01 DECK STANCHIONS OUTBOARD; RELOCATE SWIM PLATFORM BOLLARDS & ADD CLOSED CHOCKS PER C.O. 056.										